



SINTERED STONE



*Ultima 15*

The Gruppo Nueva has evolved into a powerful, dynamic, and emerging group of India's ceramic industry. We are today due to our employees' close teamwork and our shared core value system that emphasizes the commitment to excellence, closeness to customers, and the spirit of innovation.





## *Ultima 15*

Our Ultima15 Collection inherits the expressive power of concrete, a material that wrote important pages in the history of architecture and plays a fundamental role in contemporary design by virtue of the capability to radiate strong tactile energy to every context surrounding it. Feel the supremacy in detail, foremost texture and it's 15 mm thickness is all set to blow your mind by giving the robust feel in your surrounding. Manifest the Magnificence with the hues of glory inbuilt by our surfaces. Our surfaces are truly crafted to deliver an unmatched experience.

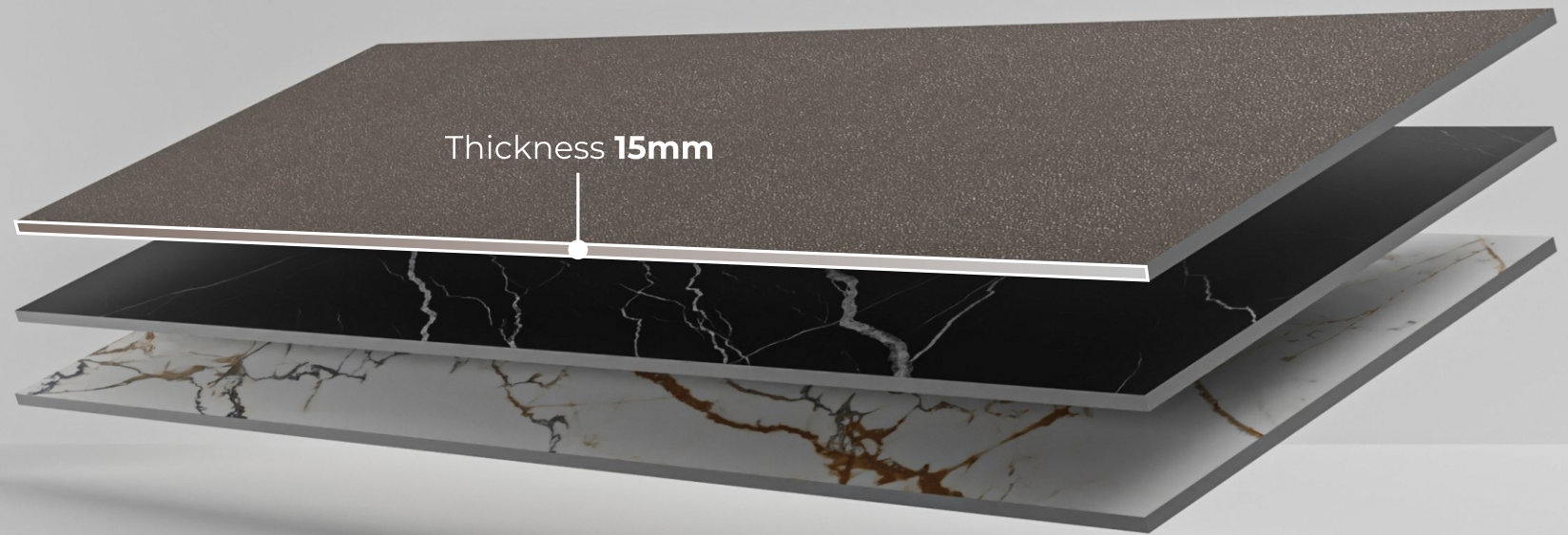
---



## ABOUT 800X2400MM

800 x 2400 x 15 MM is perfect to carry out cutting, moulding, bull nosing & Chamfering process. The multiple application which 15 mm brings into life is marvellous. We are using it as a floor, wall and countertop applications, because of the colorbody 15 mm slabs, the beauty of any statuario Or breccia is not less than the real natural figures. In the high traffic areas, like airports, shopping malls, metro stations, public parking areas, etc, the use of unglazed products in 15 mm is perfect option. We are making and promoting 15 mm nueva slabs to use as Countertops because it is food grade safe and easy to install and economic than it's competitive products while having the better ambience and feel

---





## Techonology & Innovation

Ignite is standing tall and strong on the basis of a robust infrastructure setting that is well rigged with modern technology and advanced machinery. the facility is well equipped with the latest digital printing technology. following stages are undertaken to serve the finest quality of engineered surfaces. pressing - the press without mould for large formats makes 80x240cm with any desired thickness is 15mm. digital decoration - creadigit xxl from system is a powerful machine that performs some fantastic creative work on tile. for us, quality is the top priority, we are taking our tile surface very seriously and we make perfect flat surfaces by researching, developing & maintaining glazing line parameters and kiln conditions.





# Index

|   |           |
|---|-----------|
| Application Area / Features / Approach Area | <b>01</b> |
| Plain Solid Colors                          | <b>02</b> |
| Galaxy Snp Series                           | <b>03</b> |
| Terrazzo Series                             | <b>04</b> |
| Carving Series                              | <b>05</b> |
| Light Marble Series                         | <b>06</b> |
| Dark Marbles Series                         | <b>07</b> |
| Technical Specifications                    | <b>08</b> |
| Cleaning & Maintenance                      | <b>09</b> |
| Packing Details<br>( Export & Domestic )    | <b>10</b> |



## APPLICATION AREA

Kitchen counter top

Dining table

Table top

Door and window frame

Shelves

Shower base

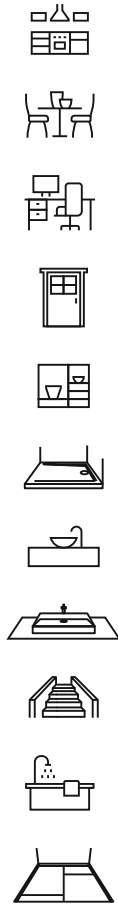
Vanity top

Wash basin

Staircase

Bathtub

Floor & Wall



## FEATURES



Lowest maintenance effort



Hygienic surface



Water resistant



Impact resistant



Frost resistant



Scratch resistant



Stain resistant



Fire resistant



Heat resistant



Resistant to bending

## APPROACH AREA



Residential Areas



Commercial Areas



Hospitals



Shops and Malls



Hotels and Restaurants



Schools and Colleges



Religious Places



Railway Stations



Parks and Outdoor Furnitures



Public Places



— PLAIN SOLID COLORS



## SUPER WHITE

**Size**  
800x2400MM

**Finish**  
Glossy / Matt

**Typology**  
Color Body

### Application Area





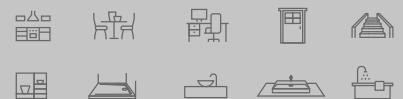
## DIAMOND BLACK

**Size**  
800x2400MM

**Finish**  
Glossy / Matt

**Typology**  
Color Body

### Application Area







## CREMA IVORY

**Size**  
800x2400MM

**Finish**  
Glossy / Matt

**Typology**  
Full Body

### Application Area





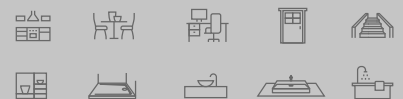
## MUSHROOM

**Size**  
800x2400MM

**Finish**  
Glossy / Matt

**Typology**  
Full Body

### Application Area





## DARKGREY

**Size**  
800x2400MM

**Finish**  
Glossy / Matt

**Typology**  
Full Body

### Application Area







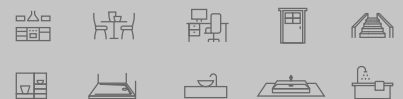
**GREY**

**Size**  
800x2400MM

**Finish**  
Glossy / Matt

**Typology**  
Full Body

**Application Area**







**BROWN**

**Size**  
800x2400MM

**Finish**  
Glossy / Matt

**Typology**  
Full Body

**Application Area**







— GALAXY SNP SERIES





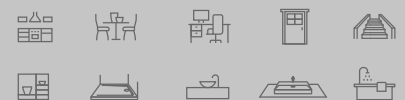
## GALAXY ROYAL

**Size**  
800x2400MM

**Finish**  
Glossy

**Typology**  
Full Body

### Application Area







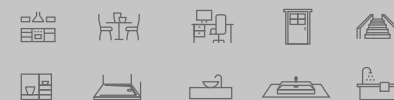
## GALAXY WHITE

**Size**  
800x2400MM

**Finish**  
Glossy

**Typology**  
Full Body

### Application Area







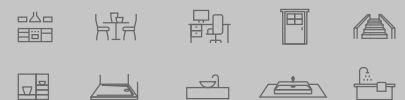
## GALAXY CREMA

**Size**  
800x2400MM

**Finish**  
Glossy

**Typology**  
Full Body

### Application Area





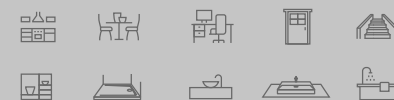
## GALAXY VERDE

**Size**  
800x2400MM

**Finish**  
Glossy

**Typology**  
Full Body

### Application Area







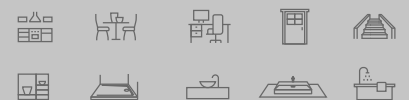
## GALAXY GREY

**Size**  
800x2400MM

**Finish**  
Glossy

**Typology**  
Full Body

### Application Area







## GALAXY MUSHROOM

**Size**  
800x2400MM

**Finish**  
Glossy

**Typology**  
Full Body

### Application Area







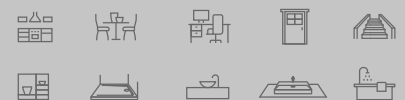
## GALAXY BROWN

**Size**  
800x2400MM

**Finish**  
Glossy

**Typology**  
Full Body

### Application Area







## GALAXY BLACK

**Size**  
800x2400MM

**Finish**  
Glossy

**Typology**  
Full Body

### Application Area

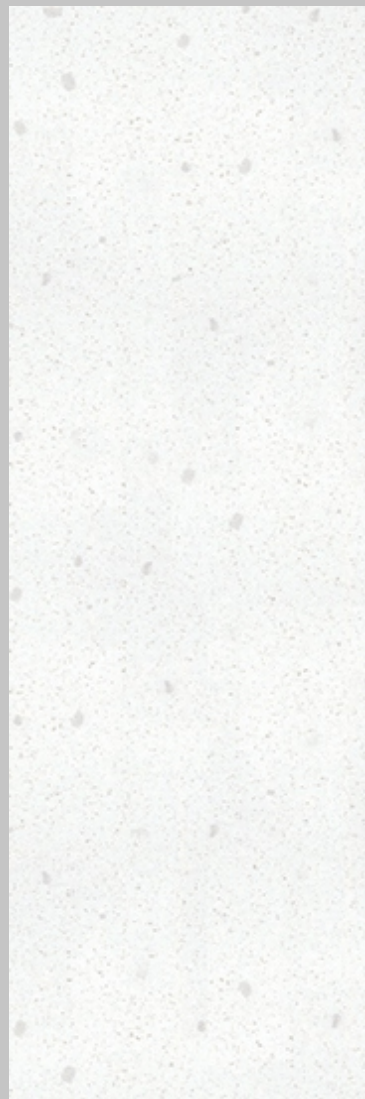






— TERRAZZO SERIES





## TERRAZZO WHITE

**Size**  
800x2400MM

**Finish**  
Glossy

**Typology**  
Full Body

### Application Area







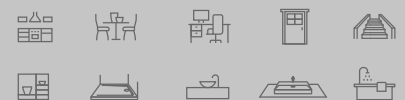
## TERRAZZO CREMA

**Size**  
800x2400MM

**Finish**  
Glossy

**Typology**  
Full Body

### Application Area





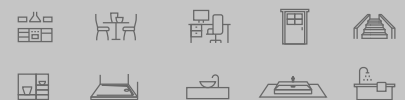
## TERRAZZO VERDE

**Size**  
800x2400MM

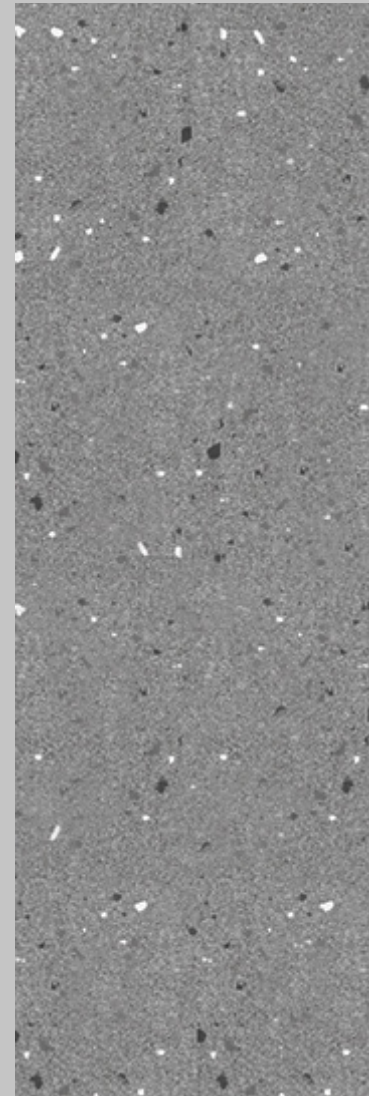
**Finish**  
Glossy

**Typology**  
Full Body

### Application Area







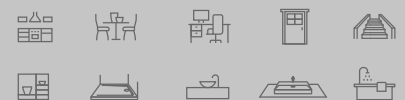
## TERRAZZO GREY

**Size**  
800x2400MM

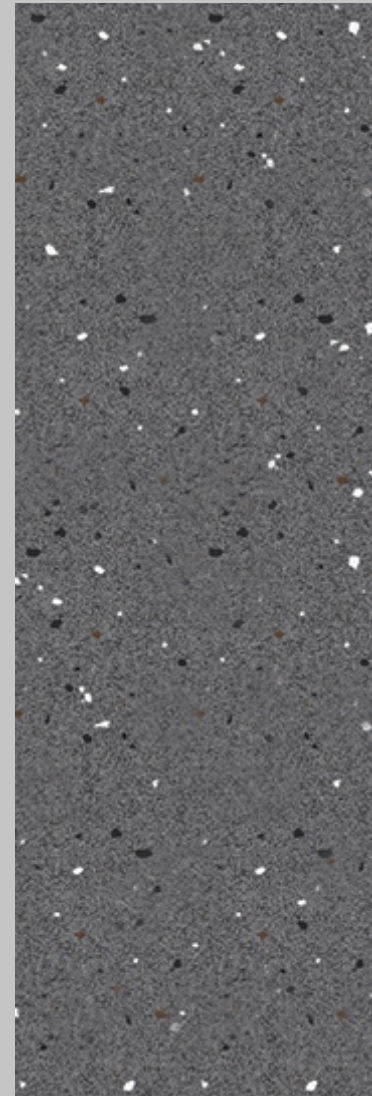
**Finish**  
Glossy

**Typology**  
Full Body

### Application Area







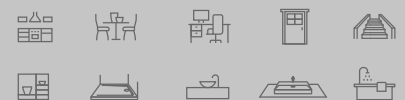
## TERRAZZO DARK GREY

**Size**  
800x2400MM

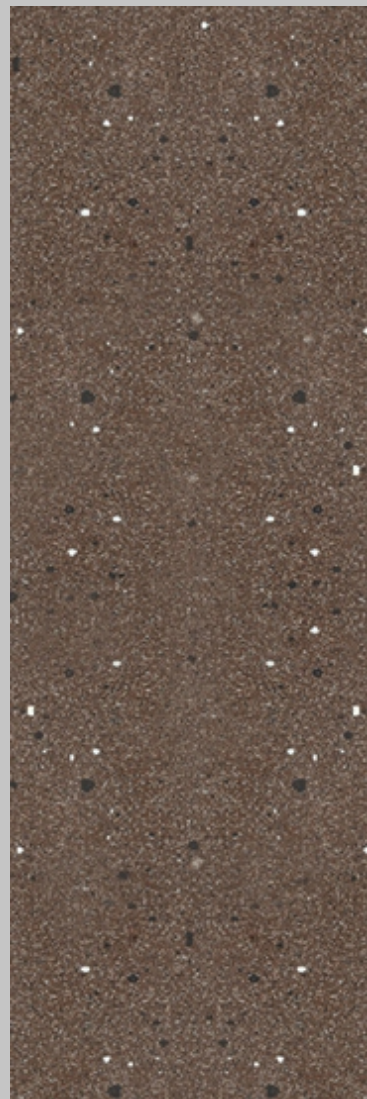
**Finish**  
Glossy

**Typology**  
Full Body

### Application Area







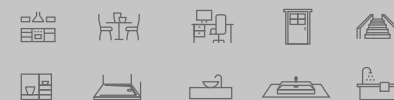
## TERRAZZO BROWN

**Size**  
800x2400MM

**Finish**  
Glossy

**Typology**  
Full Body

### Application Area







## TERRAZZO BLACK

**Size**  
800x2400MM

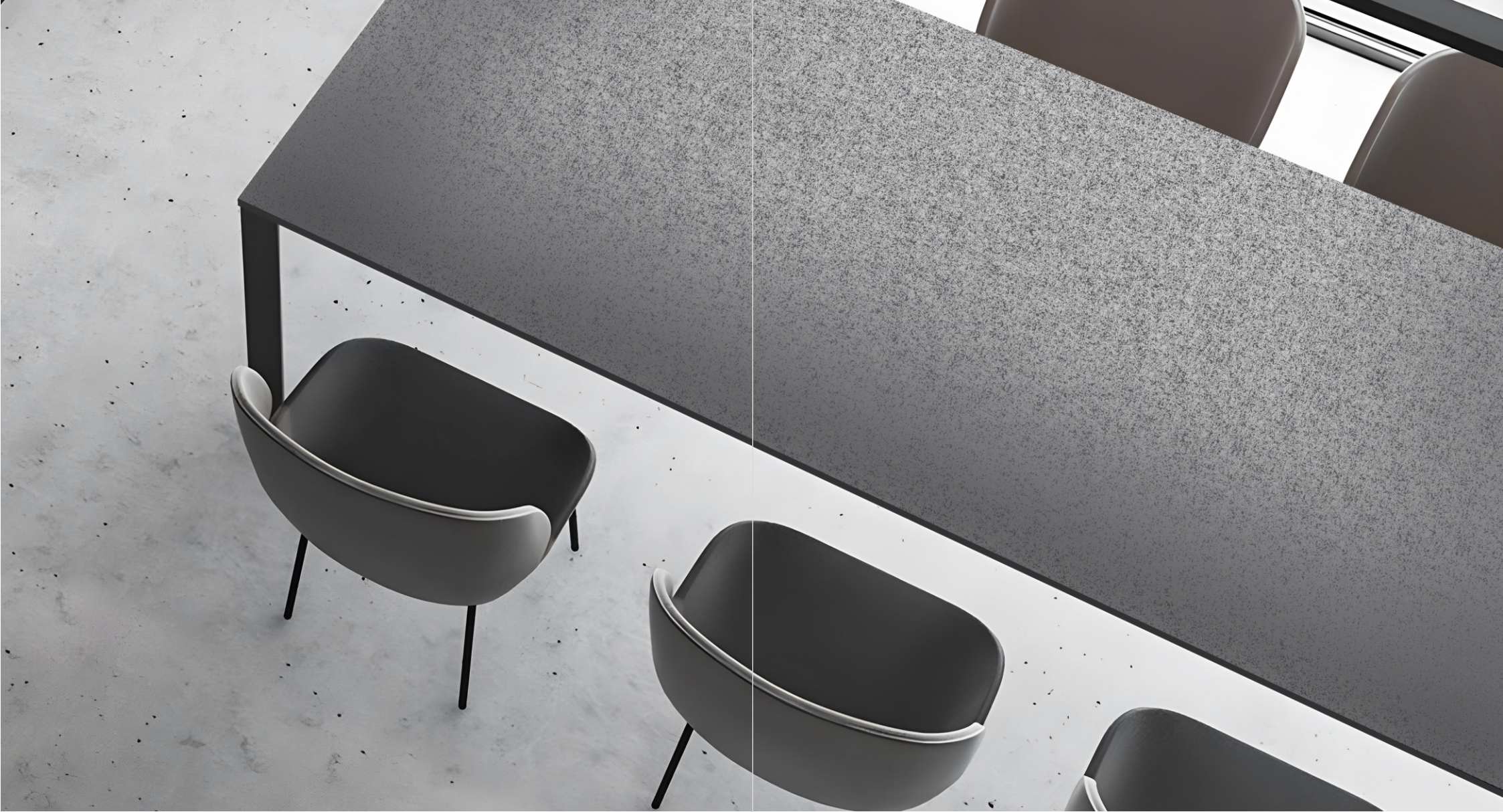
**Finish**  
Glossy

**Typology**  
Full Body

### Application Area

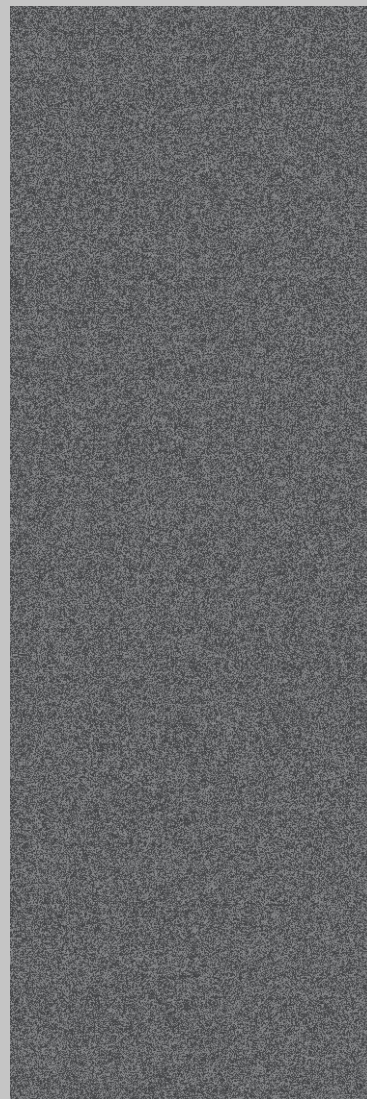






— CARVING SERIES





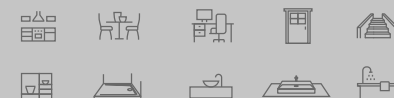
## CARVING GREY

**Size**  
800x2400MM

**Finish**  
Carving Matt

**Typology**  
Color Body

### Application Area







## CARVING BLACK

**Size**  
800x2400MM

**Finish**  
Carving Matt

**Typology**  
Color Body

### Application Area







## CARVING WHITE

**Size**  
800x2400MM

**Finish**  
Carving Matt

**Typology**  
Color Body

### Application Area







## CARVING BROWN

**Size**  
800x2400MM

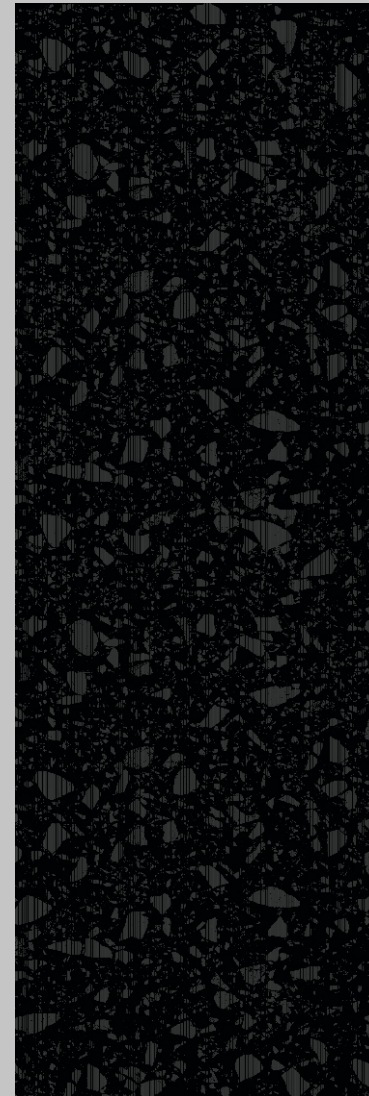
**Finish**  
Carving Matt

**Typology**  
Color Body

### Application Area







## DRAGON CHIPS BLACK

**Size**  
800x2400MM

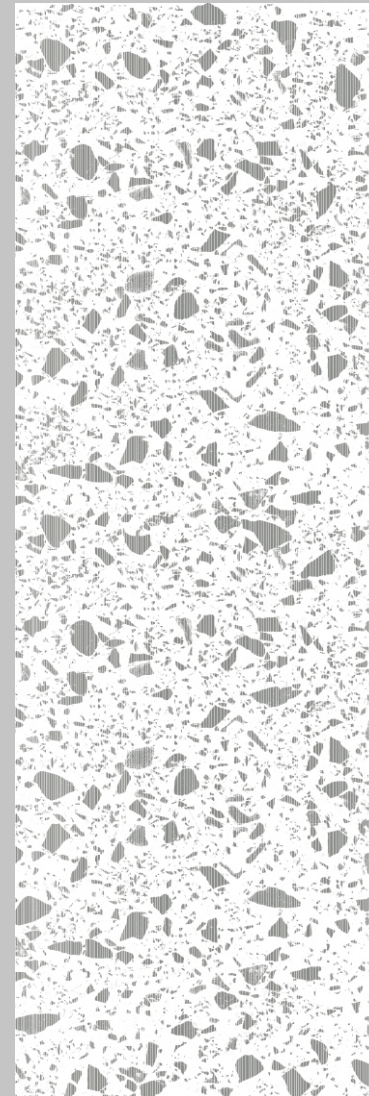
**Finish**  
Carving Matt

**Typology**  
Color Body

### Application Area







## DRAGON CHIPS WHITE

**Size**  
800x2400MM

**Finish**  
Carving Matt

**Typology**  
Color Body

### Application Area







## BLACK BERMUDA

**Size**  
800x2400MM

**Finish**  
Carving Matt

**Typology**  
Color Body

### Application Area







## WHITE BERMUDA

**Size**  
800x2400MM

**Finish**  
Carving Matt

**Typology**  
Color Body

### Application Area





## STATUARIO ICE LINEN

**Size**  
800x2400MM

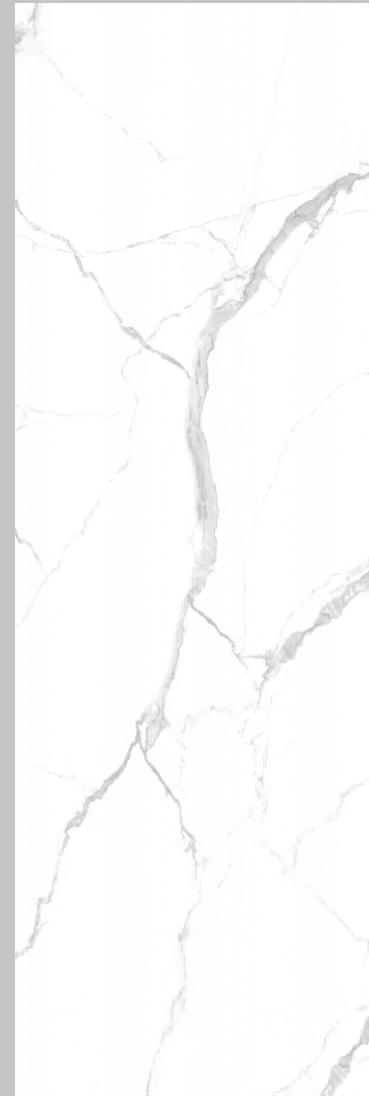
**Finish**  
Carving Matt

**Typology**  
Color Body

### Application Area







## STATUARIO ICE LAPATTO

**Size**  
800x2400MM

**Finish**  
Carving Matt

**Typology**  
Color Body

### Application Area





## FILO GREY

**Size**  
800x2400MM

**Finish**  
Carving Matt

**Typology**  
Color Body

### Application Area







## FILO BEIGE

**Size**  
800x2400MM

**Finish**  
Carving Matt

**Typology**  
Color Body

### Application Area





## MONTE CARLO

**Size**  
800x2400MM

**Finish**  
Carving Matt

**Typology**  
Color Body

### Application Area







## ROSALIA GOLD

**Size**  
800x2400MM

**Finish**  
Carving Matt

**Typology**  
Color Body

### Application Area

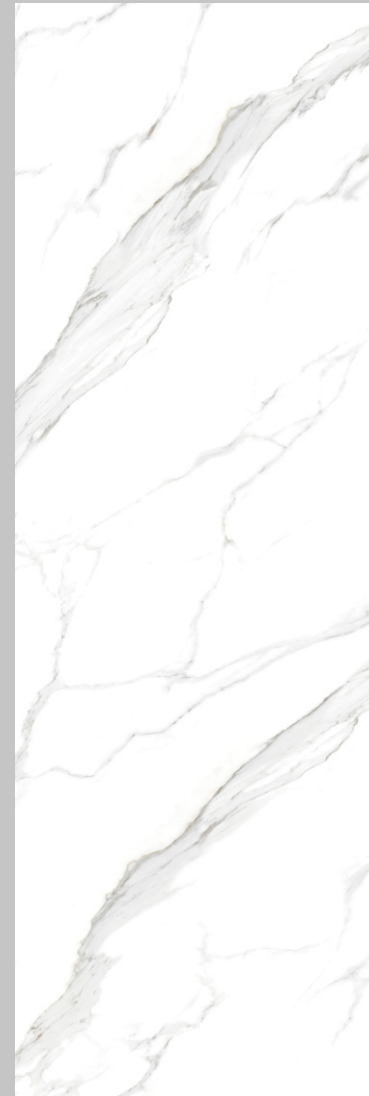






— LIGHT MARBLES





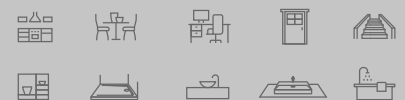
## CALACATTA WOW

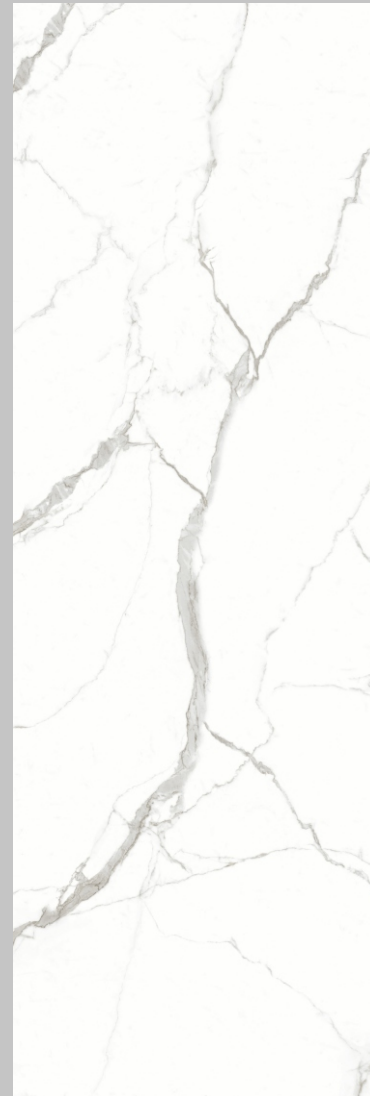
**Size**  
800x2400MM

**Finish**  
Glossy

**Typology**  
Color Body

### Application Area





## STATUARIO ICE

**Size**  
800x2400MM

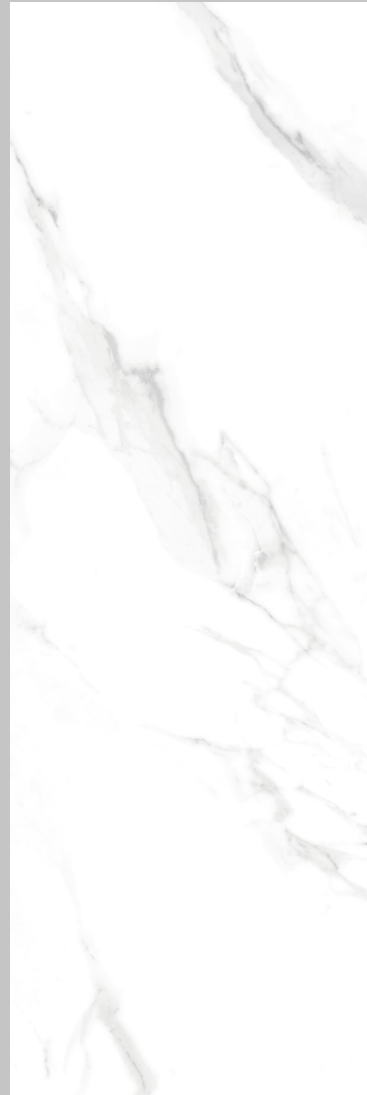
**Finish**  
Glossy

**Typology**  
Color Body

### Application Area







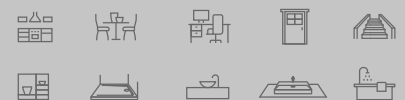
## STATUARIO VIVIAN

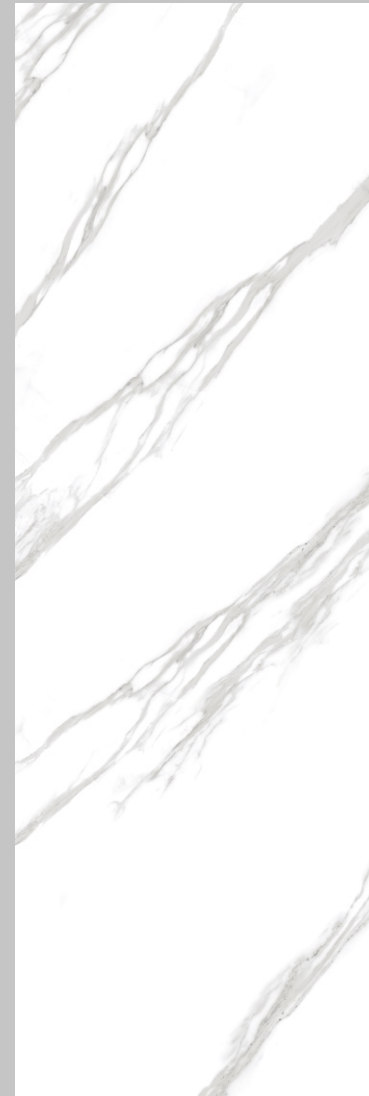
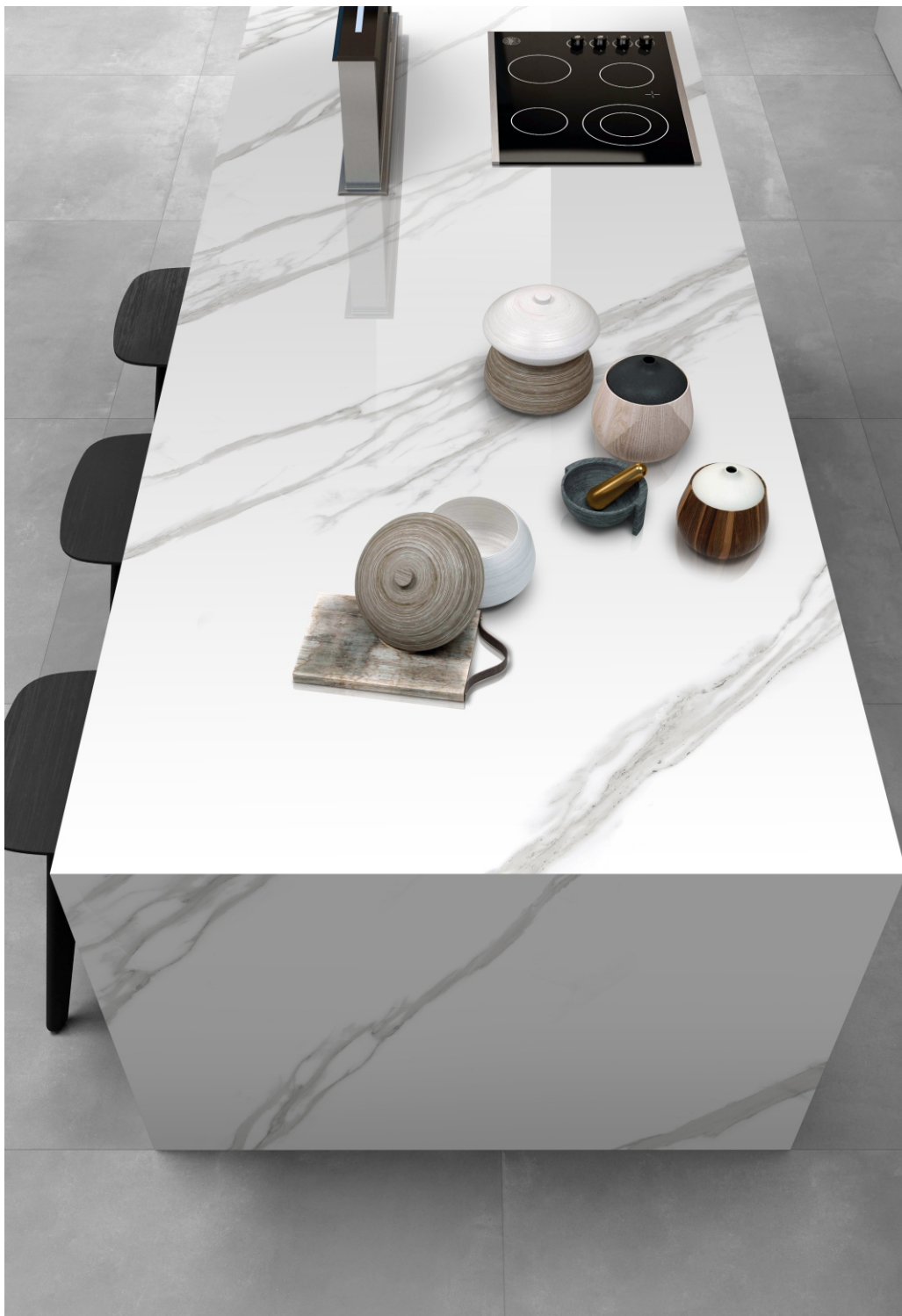
**Size**  
800x2400MM

**Finish**  
Glossy

**Typology**  
Color Body

### Application Area





## HELIX WHITE

**Size**  
800x2400MM

**Finish**  
Glossy

**Typology**  
Color Body

### Application Area







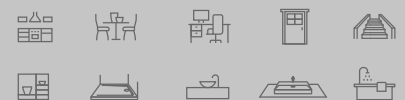
## ASACIA

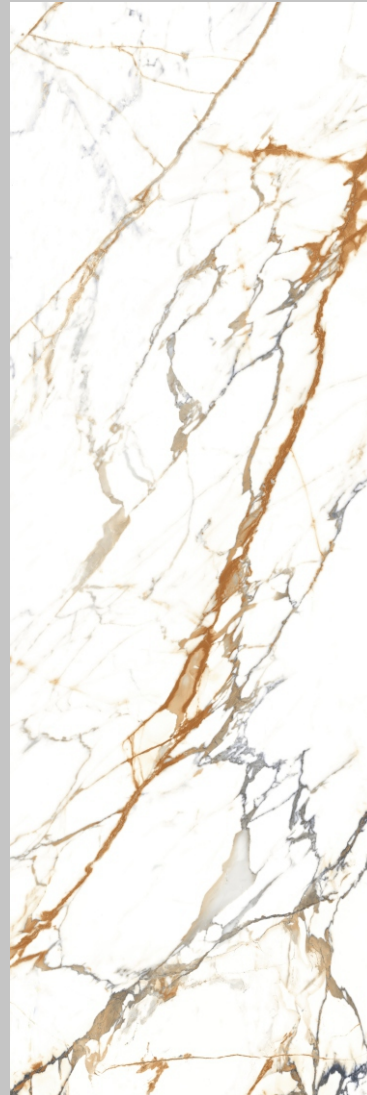
**Size**  
800x2400MM

**Finish**  
Glossy

**Typology**  
Color Body

### Application Area





## SUGAR CREAM

**Size**  
800x2400MM

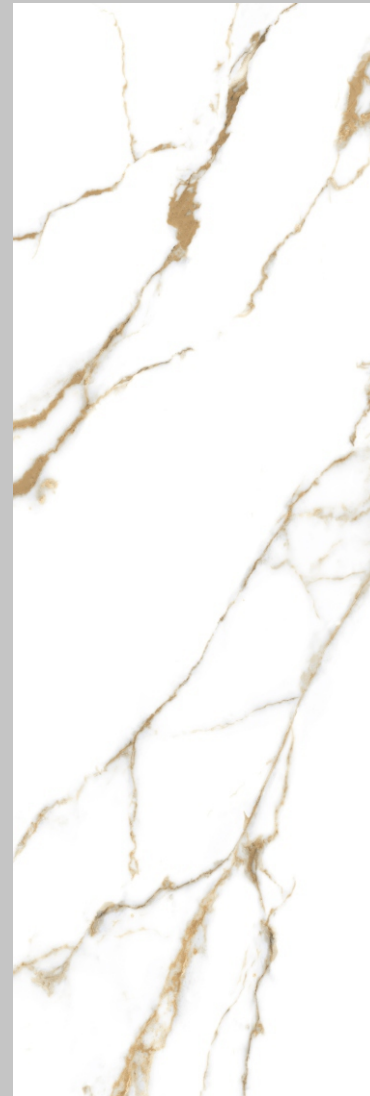
**Finish**  
Glossy

**Typology**  
Color Body

### Application Area







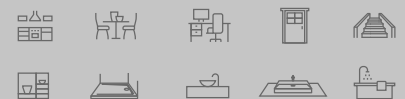
**ORO  
BIANCO**

**Size**  
800x2400MM

**Finish**  
Glossy

**Typology**  
Color Body

**Application Area**





## ALASKA GOLD

**Size**  
800x2400MM

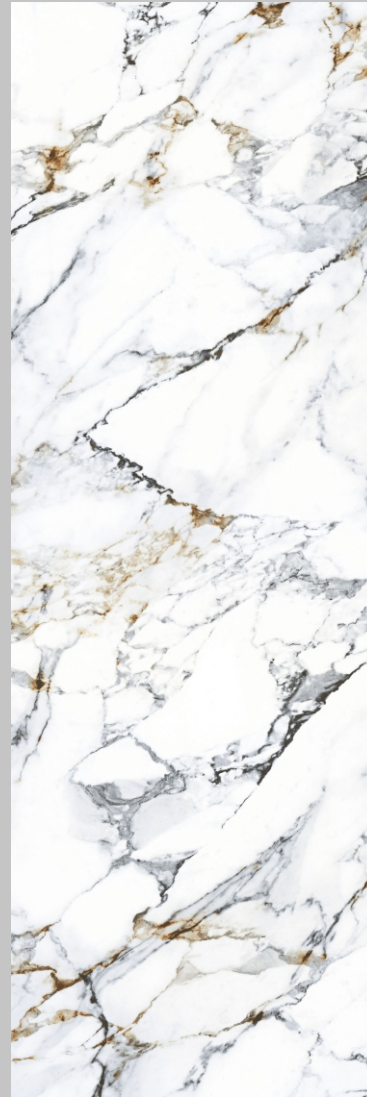
**Finish**  
Glossy

**Typology**  
Color Body

### Application Area







## ARBESCATO WHITE

**Size**  
800x2400MM

**Finish**  
Glossy

**Typology**  
Color Body

### Application Area







## PROSTONE IVORY

**Size**  
800x2400MM

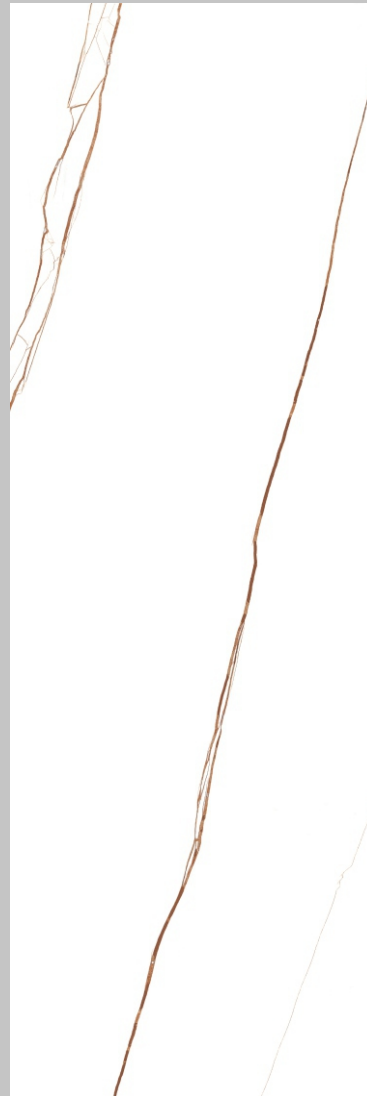
**Finish**  
Glossy

**Typology**  
Color Body

### Application Area







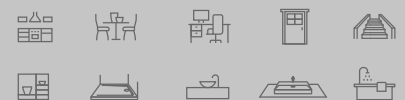
## ROSSO VENATO RED

**Size**  
800x2400MM

**Finish**  
Glossy

**Typology**  
Color Body

### Application Area





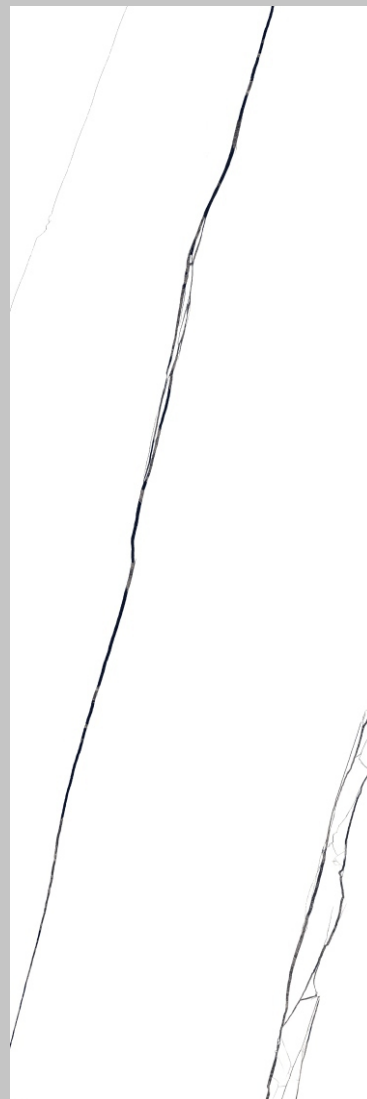
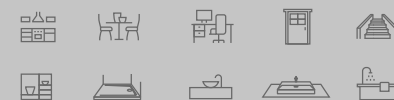
## ROSSO VENATO BLACK

**Size**  
800x2400MM

**Finish**  
Glossy

**Typology**  
Color Body

### Application Area







## PALLISANDRO

**Size**  
800x2400MM

**Finish**  
Glossy

**Typology**  
Color Body

### Application Area







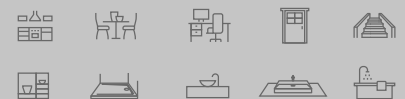
## OPERA WHITE

**Size**  
800x2400MM

**Finish**  
Glossy

**Typology**  
Color Body

### Application Area







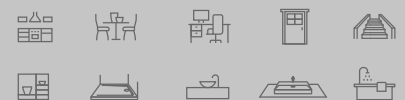
## SEA GREEN

**Size**  
800x2400MM

**Finish**  
Glossy

**Typology**  
Color Body

### Application Area







## CHIPS WHITE

**Size**  
800x2400MM

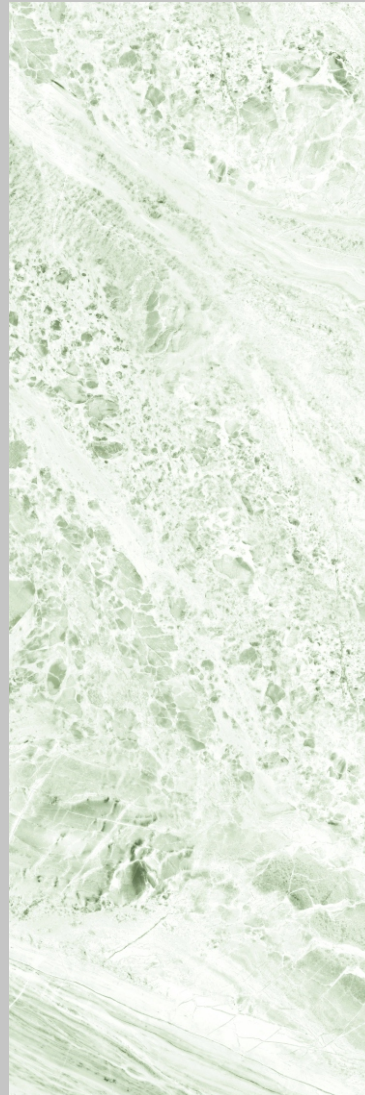
**Finish**  
Glossy

**Typology**  
Color Body

### Application Area







## GEM STONE GREEN

**Size**  
800x2400MM

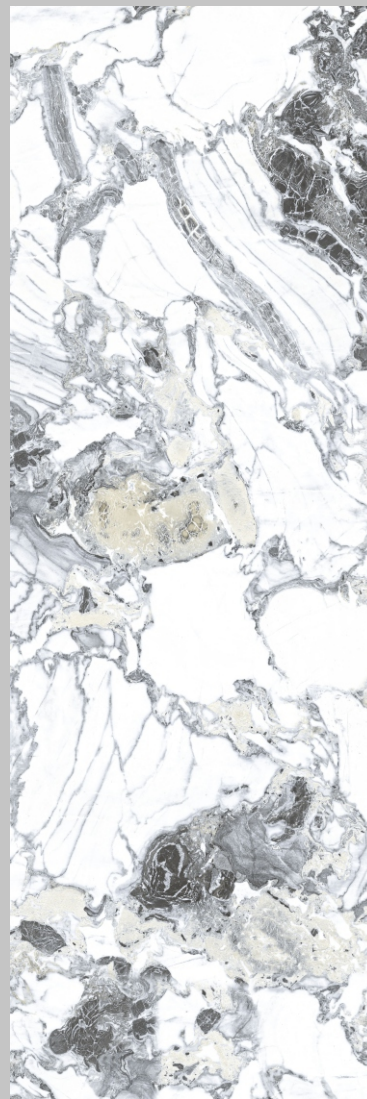
**Finish**  
Glossy

**Typology**  
Color Body

### Application Area







## ROCKFORD WHITE

**Size**  
800x2400MM

**Finish**  
Glossy

**Typology**  
Color Body

### Application Area







## TRAVERTINE

**Size**  
800x2400MM

**Finish**  
Glossy

**Typology**  
Color Body

### Application Area







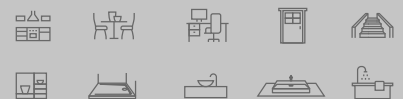
## BRECCIA BEIGE

**Size**  
800x2400MM

**Finish**  
Glossy

**Typology**  
Color Body

### Application Area







**Ignite**<sup>®</sup>  
SINTERED STONE

*Ultima 15*



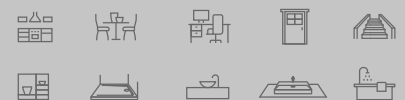
**DYNA**

**Size**  
800x2400MM

**Finish**  
Glossy

**Typology**  
Color Body

**Application Area**







## SILVER RIVER

**Size**  
800x2400MM

**Finish**  
Glossy

**Typology**  
Color Body

### Application Area







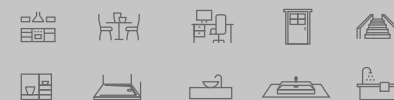
## BOTTOCHINO

**Size**  
800x2400MM

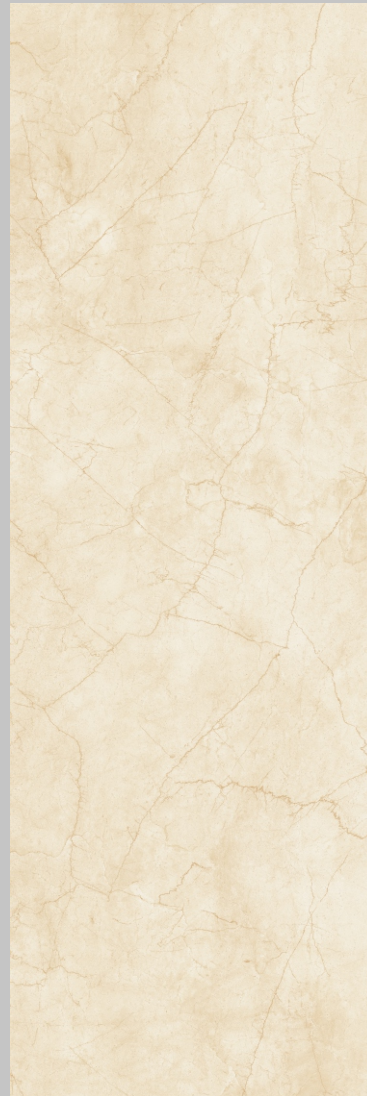
**Finish**  
Glossy

**Typology**  
Color Body

### Application Area







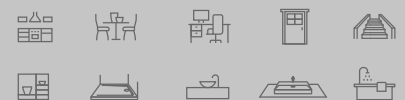
## CREMA MARFIL

**Size**  
800x2400MM

**Finish**  
Glossy

**Typology**  
Color Body

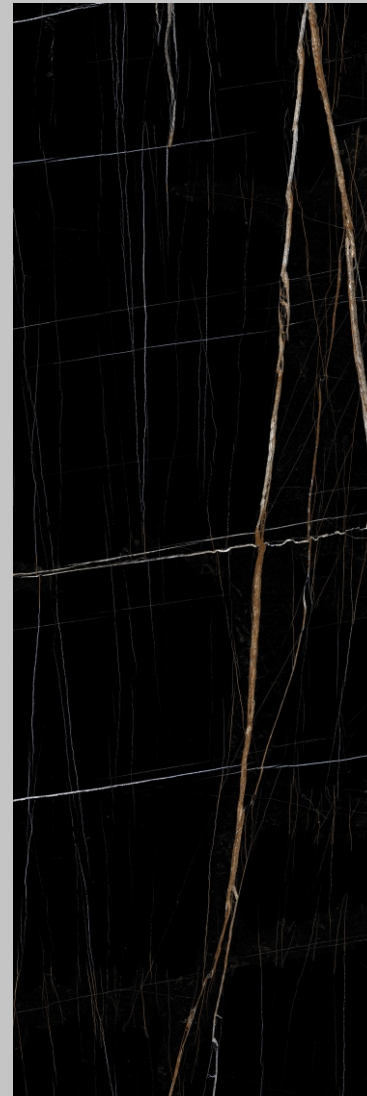
### Application Area







— DARK MARBLES



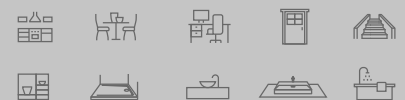
## BLACK BEAUTY

**Size**  
800x2400MM

**Finish**  
Glossy

**Typology**  
Color Body

### Application Area

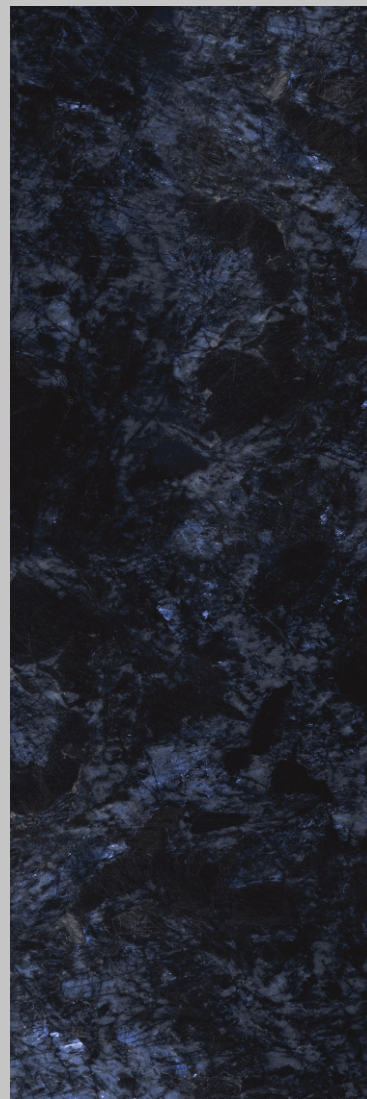






**Ignite**<sup>®</sup>  
SINTERED STONE

*Ultima 15*



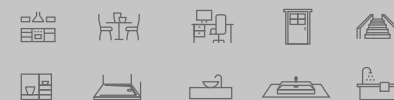
**VOLGA  
BLUE**

**Size**  
800x2400MM

**Finish**  
Glossy

**Typology**  
Color Body

**Application Area**





## DREAM NIGHT

**Size**  
800x2400MM

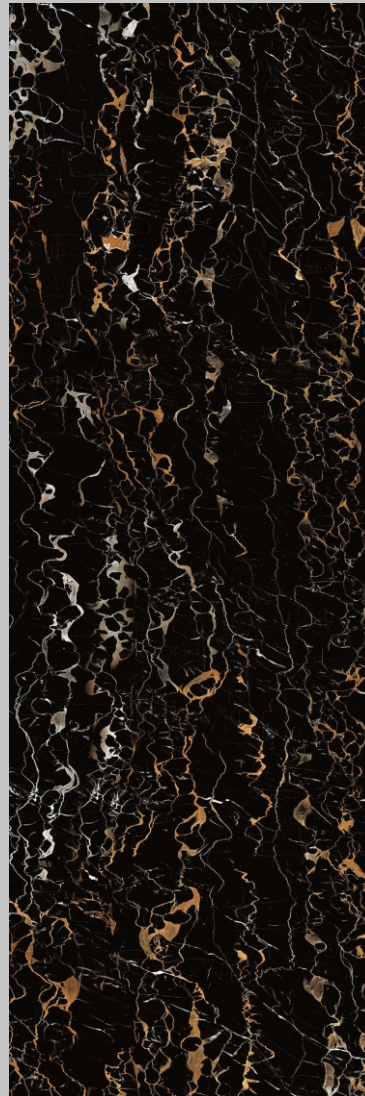
**Finish**  
Glossy

**Typology**  
Color Body

### Application Area







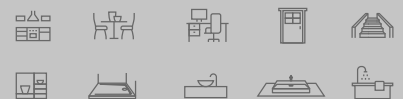
## GOLDEN PORTORO

**Size**  
800x2400MM

**Finish**  
Glossy

**Typology**  
Color Body

### Application Area







## WHITE PORTORO

**Size**  
800x2400MM

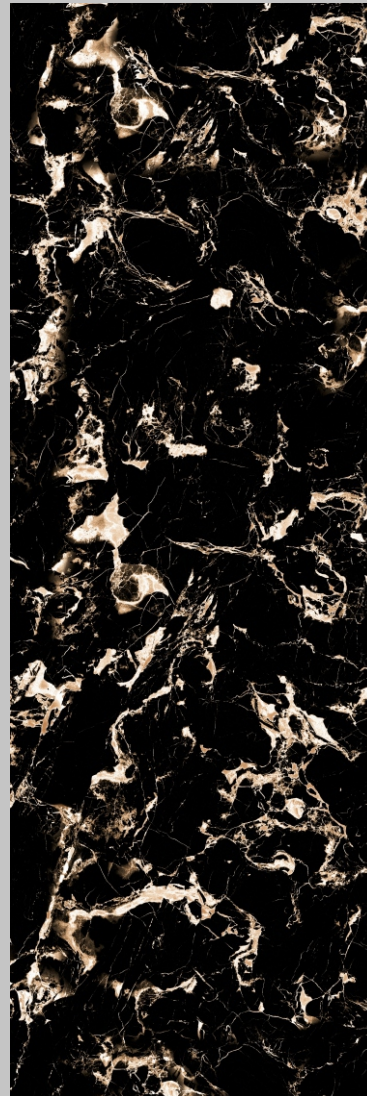
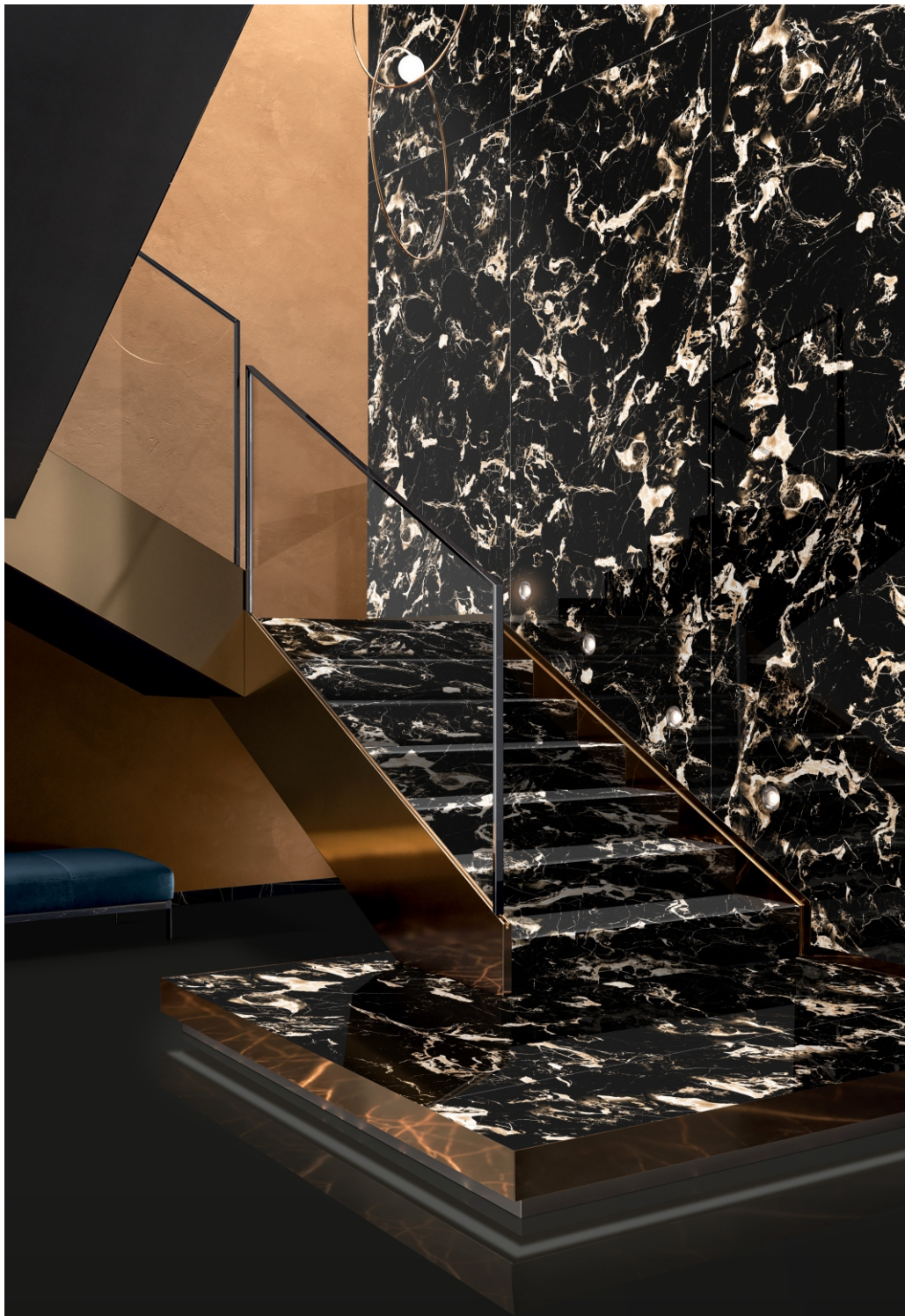
**Finish**  
Glossy

**Typology**  
Color Body

### Application Area







## PORTORO NERO GOLD

**Size**  
800x2400MM

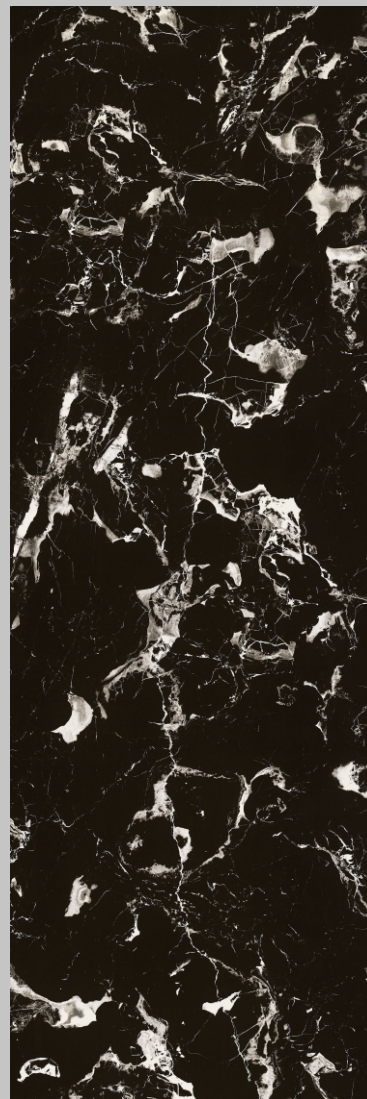
**Finish**  
Glossy

**Typology**  
Color Body

### Application Area







## PORTORO NERO

**Size**  
800x2400MM

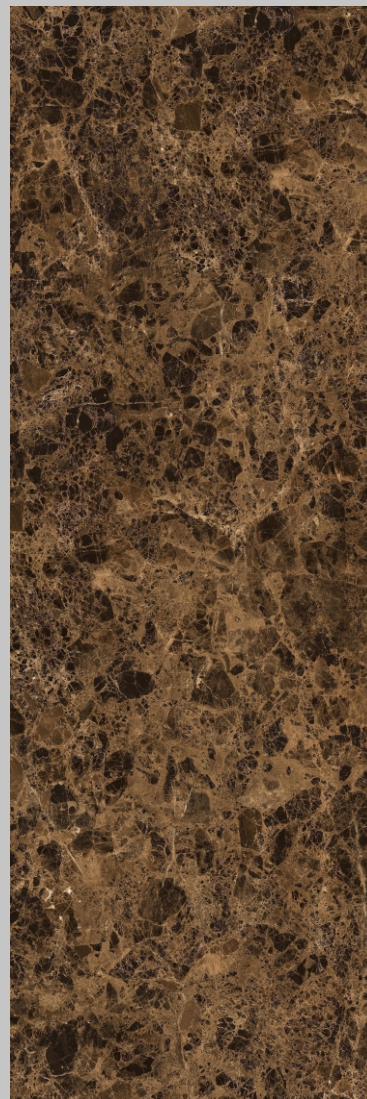
**Finish**  
Glossy

**Typology**  
Color Body

### Application Area







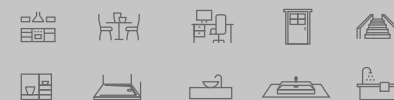
## DARK EMPERADOR

**Size**  
800x2400MM

**Finish**  
Glossy

**Typology**  
Color Body

### Application Area







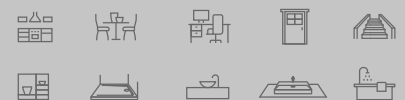
## CLEOPATRA BEIGE

**Size**  
800x2400MM

**Finish**  
Glossy

**Typology**  
Color Body

### Application Area







## CAMOFLANGE BROWN

**Size**  
800x2400MM

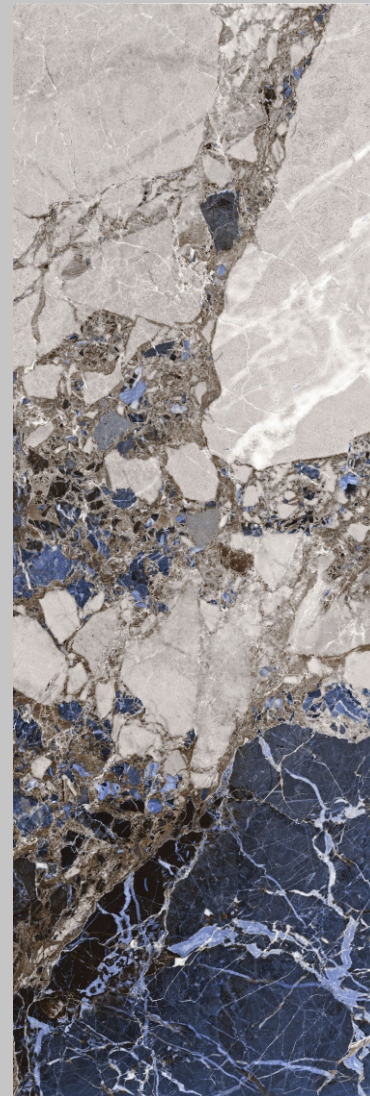
**Finish**  
Glossy

**Typology**  
Color Body

### Application Area







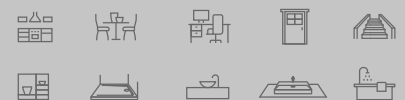
## INFINITO AZUL

**Size**  
800x2400MM

**Finish**  
Glossy

**Typology**  
Color Body

### Application Area







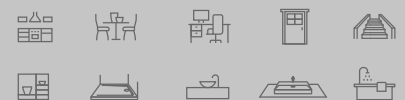
## LABRADORITE

**Size**  
800x2400MM

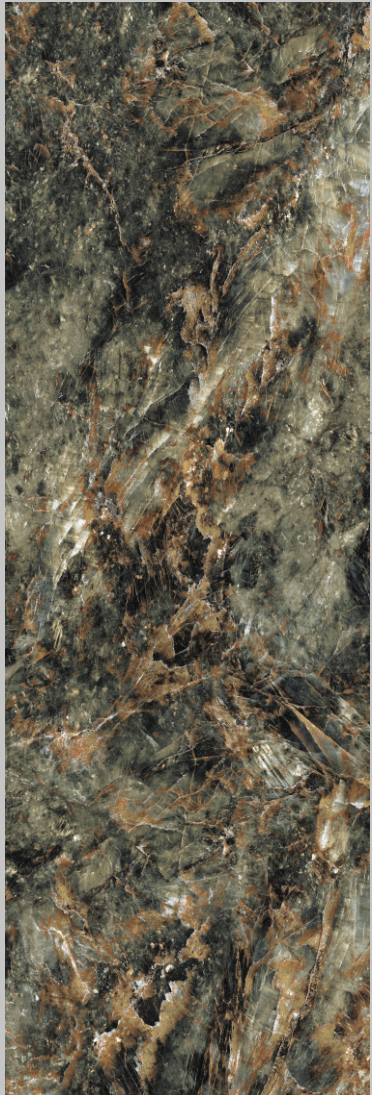
**Finish**  
Glossy

**Typology**  
Color Body

### Application Area







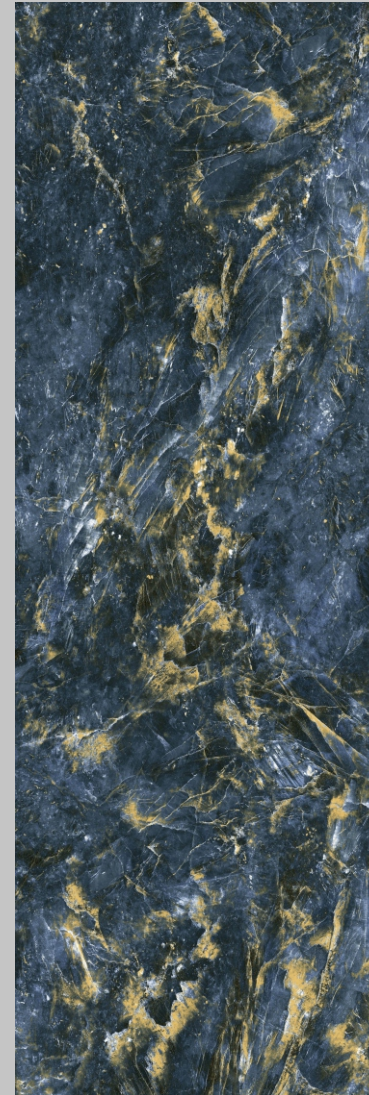
## THUNDER GREEN

**Size**  
800x2400MM

**Finish**  
Glossy

**Typology**  
Color Body

### Application Area



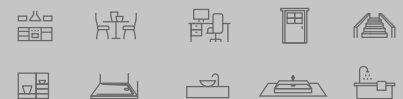
## THUNDER BLUE

**Size**  
800x2400MM

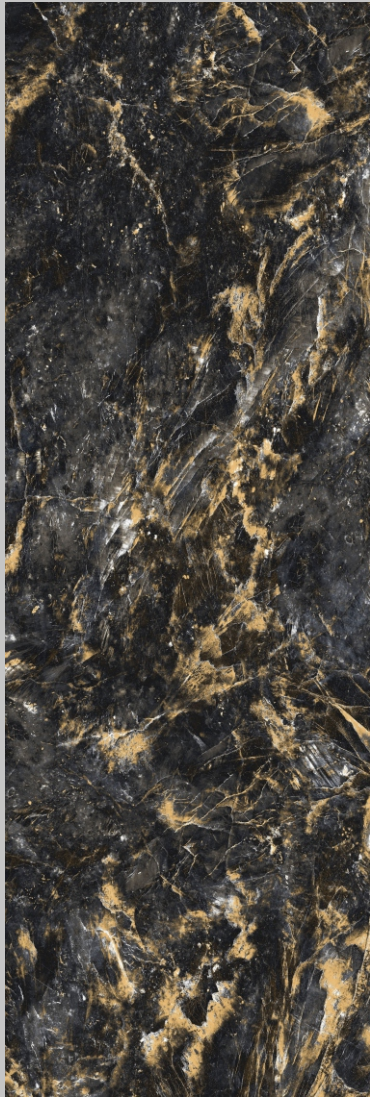
**Finish**  
Glossy

**Typology**  
Color Body

### Application Area







# THUNDER BLACK

**Size**  
800x2400MM

**Finish**  
Glossy

**Typology**  
Color Body

## Application Area



# TOBACCO BROWN

**Size**  
800x2400MM

**Finish**  
Glossy

**Typology**  
Color Body

## Application Area





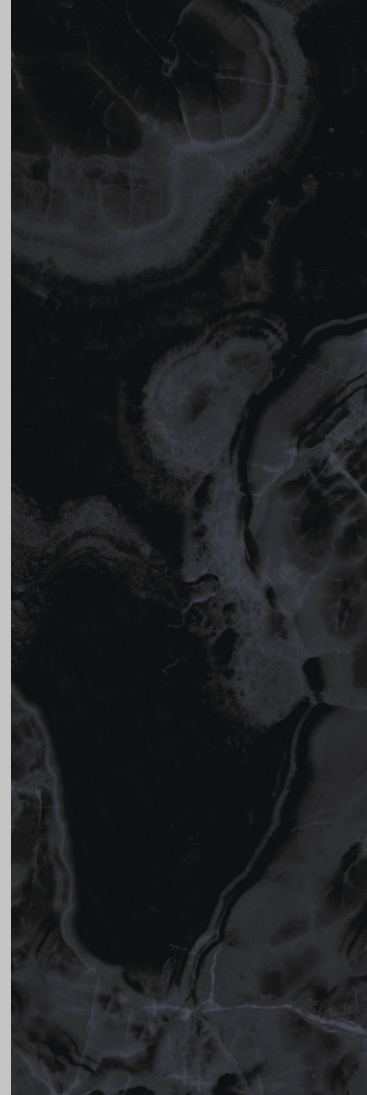
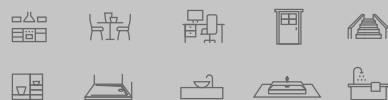
# BOTEGA GREY

**Size**  
800x2400MM

**Finish**  
Glossy

**Typology**  
Color Body

## Application Area



# ONYX BLACK

**Size**  
800x2400MM

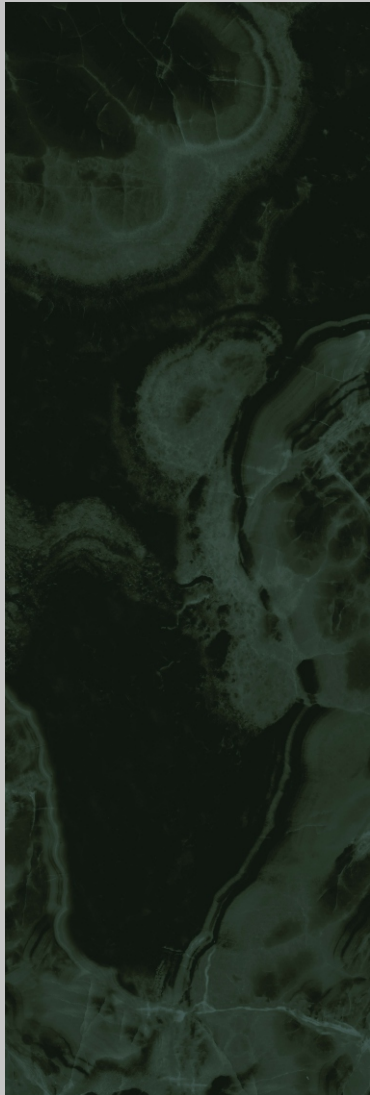
**Finish**  
Glossy

**Typology**  
Color Body

## Application Area







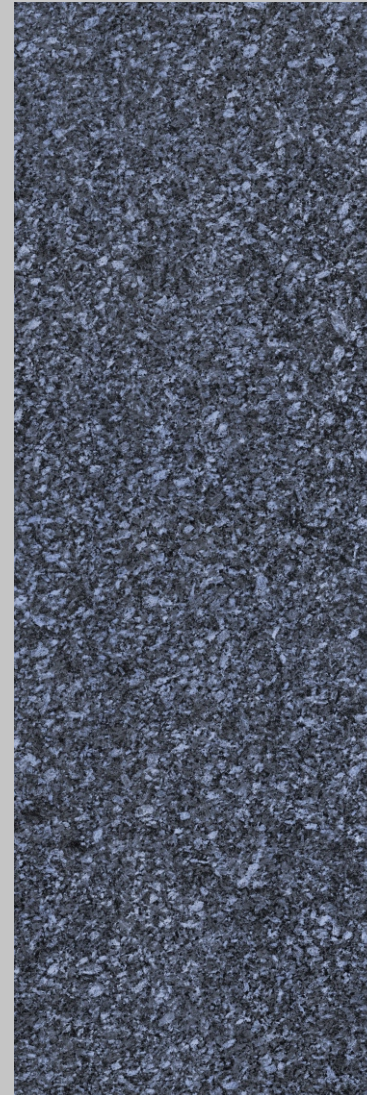
## ONYX AQUA

**Size**  
800x2400MM

**Finish**  
Glossy

**Typology**  
Color Body

### Application Area



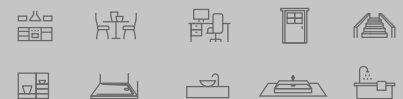
## BLUE PEARL

**Size**  
800x2400MM

**Finish**  
Glossy

**Typology**  
Color Body

### Application Area





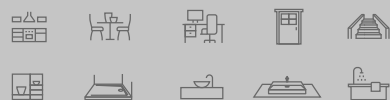
**BLACK  
PEARL**

**Size**  
800x2400MM

**Finish**  
Glossy

**Typology**  
Color Body

**Application Area**



*Ultima 15*





TECHNICAL SPECIFICATION

| CHARACTERISTIC  | STANDARD AS PER<br>ISO13006:2018/<br>EN14411 Gr.BIa | STANDARD AS PER<br>IS 15622:2017 Gr.BIa | METHOD OF<br>TESTING     | MEAN VALUE OF<br>GRUPPONUEVA                   |
|---|---|---|--------------------------|--|
| <strong>Regulatory Properties</strong>                            |   |   |                          |  |
| Deviation in Length and Width                                     | ±0.30 % (±100 mm)                                   | ±0.10 %                                 | ISO 10545-2/IS 13630-1   | ± 0.10 %                                       |
| Deviation in Thickness  | ±5.0 % (± 0.50 mm)                                  | ±5.0 %                                  | ISO 10545-2/IS 13630-1   | ± 5.0 %  |
| Straightness in Side  | ±0.30 % (± 0.80 mm)                                 | ±0.10 %                                 | ISO 10545-2/IS 13630-1   | ± 0.10 %                                       |
| Rectangularity  | ±0.30 % (±150 mm)                                   | ±0.10%                                  | ISO 10545-2/IS 13630-1   | ± 0.10 %                                       |
| Surface Flatness Central Curvature                                | ±0.40 % ( ± 1.80 mm)                                | ±0.50 %                                 | ISO 10545-2/IS 13630-1   | ± 0.20 %                                       |
| Surface Flatness Edge Curvature                                   | ±0.40 % ( ± 1.80 mm)                                | ±0.50 %                                 | ISO 10545-2/IS 13630-1   | ± 0.20 %                                       |
| Surface Flatness Warpage  | ±0.40 % (± 1.80 mm)                                 | ±0.50 %                                 | ISO 10545-2/IS 13630-1   | ± 0.10 %                                       |
| Surface Quality   | >95% defects free                                   | >95% defects free                       | ISO 10545-2/IS 13630-1   | >95% defects free                              |
| Small Color Difference<br>(For Plain Colour)                      | ΔE <1.00  | N.A.                                    | ISO 10545-16             | ΔE <0.80                                       |
| Glossiness ( Polished)  | As per Manufacturer                                 | As per Manufacturer                     | Gloss Meter 60°          | ≥ 90   |
| Glossiness (Satin/Posh)   | As per Manufacturer                                 | As per Manufacturer                     | Gloss Meter 60°          | 15 ≤ Gloss Value ≤ 25                          |
| <strong>Structural Properties</strong>                            |   |   |                          |  |
| Water Absorption  | ≤0.50 %   | ≤0.080 %                                | ISO 10545-3/IS 13630-2   | ≤0.080 %                                       |
| Bulk Density  | As per Manufacturer                                 | Min 2.20 g/cc                           | ISO 10545-3/IS 13630-2   | > 2.28 gm/cc                                   |
| <strong>Massive Mechanical Properties</strong>                    |   |   |                          |  |
| Modulus of Rupture  | Min. 35.0 N/mm²                                     | Min. 35.0 N/mm²                         | ISO 10545-4/IS 13630-6   | Min. 40.0 N/mm²                                |
| Breaking Strength Thickness ≥7.5 mm                               | Min 13000 N   | Min 13000 N                             | ISO 10545-4/IS 13630-6   | Min 60000 N                                    |
| <strong>Surface Mechanical Properties</strong>                    |   |   |                          |  |
| MOHS Hardness #   | As per Manufacturer                                 | Min. 5                                  | BS EN 15771/IS 13630-13  | Polished Min 4**/Satin & Posh<br>Min 6         |
| Surface Abrasion Resistance #                                     | As per Manufacturer                                 | Min. Class II                           | ISO 10545-7/IS 13630-11  | Polished Min II**/Satin,Posh &<br>Matt Min III |
| <strong>Thermal Hygrometric Properties</strong>                   |   |   |                          |  |
| Moisture Expansion  | Max 0.06% (0.6 mm/m)                                | Max 0.02 mm/m                           | ISO 10545-10/IS 13630-3  | Max 0.02 mm/m                                  |
| Thermal Expansion(COE) at 100°C                                   | As per Manufacturer                                 | Max. 6.0 x 10-6                         | ISO 10545-8/IS 13630-4   | Max. 6.0 x 10-6                                |
| Thermal Shock Resistance  | Min 10 Cycle  | Min 10 Cycle                            | ISO 10545-9/IS 13630-5   | Min 10 Cycle                                   |
| Impact Resistance(COR) #  | Min. 0.55   | Min 0.55                                | ISO 10545-5/IS 13630-14  | Min 0.55                                       |
| Frost Resistance  | As per Manufacturer                                 | As per Manufacturer                     | ISO 10545-12/IS 13630-10 | Frost Proof                                    |
| Crazing Resistance at 7.5 bar                                     | 4 Cycle   | 4 Cycle                                 | ISO 10545-11/IS 13630-9  | 4 Cycle  |
| <strong>Chemical Properties</strong>                              |   |   |                          |  |
| Resistance to Staining Glazed                                     | Min. Class 3  | Min Class 1                             | ISO 10545-14/IS 13630-8  | Min. Class 3/Min. Class 1                      |
| Resistance to Household Chemicals &<br>Swimming Pool Salts Glazed | Min Class GB  | Min Class AA                            | ISO 10545-13/IS 13630-8  | Min Class GB/Min Class AA                      |
| Resistance to Low Concentrate Acid<br>and Alkalis Glazed          | As per Manufacturer                                 | As per Manufacturer                     | ISO-10545-13/IS 13630-8  | Min Class GLB***/<br>Min Class A***            |
| Resistance to High Concentrate Acid<br>and Alkalis Glazed         | As per Manufacturer                                 | As per Manufacturer                     | ISO-10545-13/IS 13630-8  | Min Class GHB***/<br>Min Class A***            |
| <strong>Safety Properties</strong>                                |   |   |                          |  |
| Skid Resistance -[DCOF-WET<br>PENDULUM]##                         | As per Manufacturer                                 | As per Manufacturer                     | BS 7976-2                | Glossy ≥PQ, Satin,<br>Posh ≥PIMatt ≥P2         |
| Slip Resistance -Satin/ Matt (DCOF- R<br>Value )##                | As per Manufacturer                                 | As per Manufacturer                     | DIN 51130                | R9 to R13                                      |
| Lead and Cadmium release  | As per Manufacturer                                 | N.A.                                    | ISO-10545-15             | Does not yield Pb &Cd                          |

\* Whichever is Lower  
\*\* With nano technology (Polished Vitrified tiles) Depending on Application area (low or high intensity of traffic)  
\*\*\* Except Hydrofluoric Acid & it's compound  
# Tiles Intended for use on floor  
## For Floor tiles,as per customer requirement

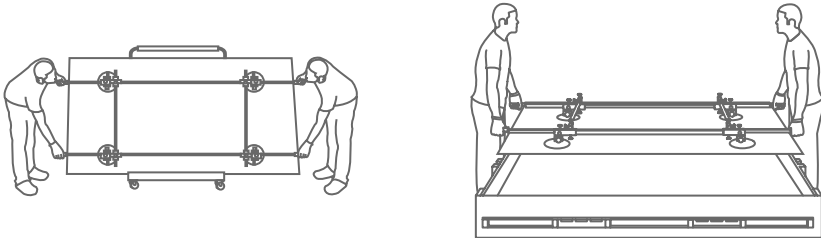
PACKING DETAILS

| PRODUCT  | SIZE     | ACTULE SIZE | THICKNESS | TILES / BOX | COVERAGE AREA / BOX |            |
|----------|----------|-------------|-----------|-------------|---------------------|------------|
| ULTIMA15 | 80x240cm | 800x2400mm  | 15 mm     | 1 pc        | 20.67 Sq ft         | 1.92 Sq ft |
| ULTIMA15 | 80x300cm | 800x3000mm  | 15 mm     | 1 pc        | 25.84 Sq ft         | 2.4 Sq ft  |

MANUALLY TRANSPORTING ULTIMA15 COUNTER TOP

Only for 1/4" Slabs

MOVING A ULTIMA15 COUNTERTOP



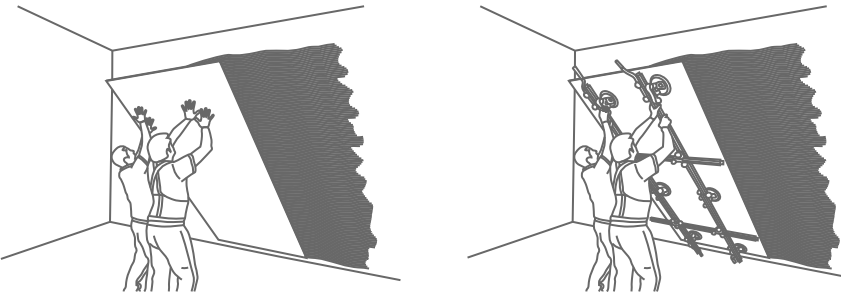
RAISING A ULTIMA15 COUNTERTOP ONTO A BENCH



✗ INCORRECT

✓ CORRECT

HANDLING ULTIMA15 FOR WALL



✗ INCORRECT

✓ CORRECT

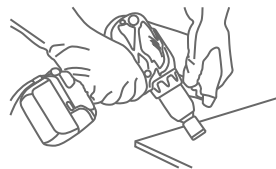
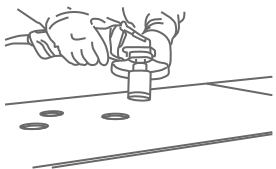
## WORKING WITH THE VARIOUS VERSIONS OF ULTIMA15 COUNTERTOP

### CUTTING WITH DIAMOND DISCS



Our products can be cut using diamond discs fitted onto the hand-held electrical grinding machine. The speed of Disc rotation must be high (>10000 RPM) and should have a low feed rate (< 1 m/min). It may be required to cool the disc with water. Recommended discs are the thin types generally used for cutting porcelain stoneware. The surface should be kept on a FLAT base while cutting without any gap underneath

### DRILLING



You can use cutting discs fitted to battery-operated screwdrivers or angle grinders, electrical drills as an alternative.

### INTERNAL CUT / L-SHAPED CUT

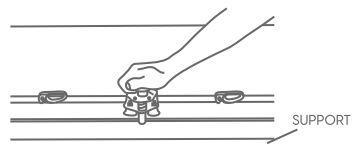
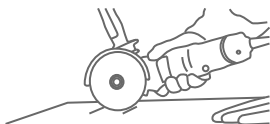


To get internal and L-shaped corners & to reduce the risk of breakage, round off the vertex of the internal corner using bits with a radius of at least 5mm. Then cut with diamond discs, be cautious to stop moving the cutting tool forward. To drill and cut using diamond discs, follow the instructions provided above.

When using these tools:

- Cool the point being drilled with water
- Don't put too much pressure and bear in mind the resistance of the type of laminated stoneware you are working on
- If you are using tungsten bits, start drilling at a low speed
- If you are using drills or screwdrivers, do not select hammering mode

### EDGE-FINISHING

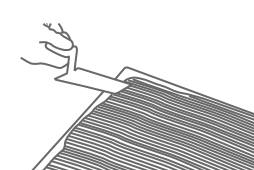


## INSTRUCTIONS FOR MANUAL INSTALLATION

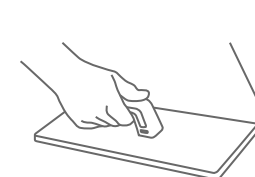
### SINGLE LAYER METHOD



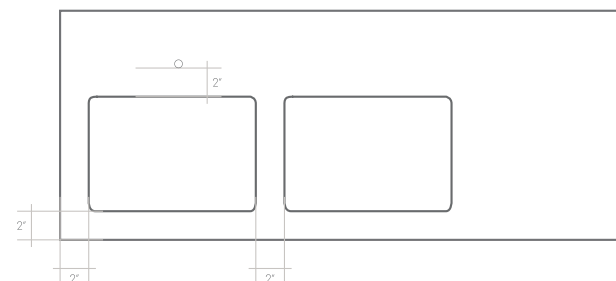
### DOUBLE-LAYER METHOD



### COMPRESSING THE TILE



## CUTOUT DESIGN



The minimum gap between a cutout and the edge of the slab must be at least 2". The size recommends distances greater than 2" when the kitchen design allows as it makes the countertop firmer.

## IMPORTANT

All cutout corners must have a minimum diameter of 1/4". Never leave 90° angles. We recommend radiuses of more than 1/4" when the kitchen design allows as it makes the countertop firmer.



✓ CORRECT



✗ INCORRECT



✗ INCORRECT





✗ INCORRECT



## CLEANING INSTRUCTIONS

### DAY TO DAY CLEANING

| Neutral, wax-free detergent list   |   | Neutral, wax-free detergent list |   |  |
|--|---|----------------------------------|---|--|
| <p>ⓘ Follow the instructions given on the package. Test the product before actual use. This applies in particular to honed or polished products.</p> |   | Support to clean                 | What do you see?  | What should you do?  |
| Name of detergent  | Manufacturer  | ULTIMATE COUNTERTOP              | <p>Glossy stains</p>       | <p>What should you do?</p> <p>Apply a slightly acidic detergent (such as Tile Cleaner by FABERCHIMICA or Bonamain PLUS the Bonasy stems Italy) undiluted and leave for 5-10 minutes. Rub with a white pad, rinse well with water and dry with microfibre cleaning cloth.</p> |
| <p>Floor Cleaner<br/>Fila Cleaner<br/>Pflegerreiniger<br/>HMK P15<br/>Bonamain Plus<br/>Bonadecon</p>  | <p>Faberchimica<br/>Fila<br/>Lithofin<br/>HMK<br/>Bonasystems Italia<br/>Bonasystems Italia</p> |                                  | <p>It stains, absorbs</p>  |  |

### RESISTANCE TO COLD LIQUIDS

| EN 12720 - RESISTANCE TO COLD LIQUIDS    |              |        |        |        | CATAS procedure - RESISTANCE TO COLD LIQUIDS (CLEANING PRODUCTS) |                         |
|--|--------------|--------|--------|--------|--|-------------------------|
| Products                                 | Contact Time |        |        |        | Products   | Contact Time : 16 hours |
|  | 16 hours     | 1 hour | 10 min | 10 sec |  |                         |
| Acetic acid (10 % aqueous solution)      | 5            | /      | /      | -      | Cif Gel with bleach  | 5 (No change)           |
| Acetone                                  | 5            | -      | -      | /      | Cif Spray active with bleach                                     | 5 (No change)           |
| Ammonia (10 % aqueous solution)          | 5            | /      | /      | -      | Cillit Bang limestone and dirt                                   | 5 (No change)           |
| Red Wine                                 | 5            | /      | /      | -      | Cif Power Cream Kitchen  | 5 (No change)           |
| Citric acid (10 % aqueous solution)      | 5            | /      | /      | -      | Ajax Classic Universal   | 5 (No change)           |
| Detergent Solution                       | 5            | /      | -      | -      | Glassex with ammonia   | 5 (No change)           |
| Coffee                                   | 5            | /      | -      | -      | Multipurpose Sanitizing Vetril                                   | 5 (No change)           |
| Chloramine T (2.5% aqueous solution)     | 5            | /      | /      | -      | Ace bleach   | 5 (No change)           |
| Ethanol (48% aqueous solution)           | 5            | /      | /      | -      | Vickal   | 5 (No change)           |
| Ethyl-butyl acetate (1:1)                | 5            | -      | -      | /      | Denatured alcohol  | 5 (No change)           |
| Olive Oil                                | 5            | /      | /      | -      | Ammonia (sol6 / 7 %)   | 5 (No change)           |
| Paraffin oil                             | 5            | /      | -      | -      | Mastro Lindo   | 5 (No change)           |
| Sodium Carbonate (10 % aqueous solution) | 5            | /      | -      | -      | Ajax floors  | 5 (No change)           |
| Sodium chloride (15% aqueous solution)   | 5            | /      | -      | -      | Rio Casamia floors   | 5 (No change)           |
| Tea                                      | 5            | /      | -      | -      | Lysiform Casa  | 5 (No change)           |
| Distilled water                          | 5            | /      | -      | -      |  |                         |
| Lager Beer                               | 5            | /      | -      | -      |  |                         |
|  | 5            | /      | /      | -      |  |                         |

| Evaluation of the results | Contact Time : 16 hours     |
|---------------------------|-----------------------------|
| 5                         | No change                   |
| 4                         | Slight level of change      |
| 3                         | Moderate level of Change    |
| 2                         | Significant level of Change |
| 1                         | Very high level of change   |

| Evaluation of the results |                           |
|---------------------------|---------------------------|
| /                         | Not necessary             |
| -                         | Not required by UNI 10944 |

### HEAVY CLEANING

| Support to clean    | Type of dirt                    | What to use              | Instructions   | Name of detergent   | Manufacturer   |
|---------------------|---------------------------------|--------------------------|--|---|--|
| ULTIMATE COUNTERTOP | Coffee, Coca Cola®, fruit juice | Detergent Alkaline-based | Follow the instructions given by the manufacturer of the detergent.  | Coloured stain remover Ps87 Gresind   | Faberchimica Fila Panaria Group  |
|                     | Wine                            | Oxidising detergent      | Follow the instructions given by the manufacturer of the detergent.  | Oxidant   | Faberchimica   |
|                     | Lime residues                   | Acid-based etergents     | Follow the instructions given by the manufacturer of the detergent. Test the product on the tiles before use. This cooles in particular to honed or polished products.   | Vickal  | Procter & Gamble   |
|                     | Rust                            | Acid-based etergents     | Dilute the product and apply directly on the stain. Allow to act for 10/20 minutes then rinse thoroughly. If necessary repeat. Test the product on the tiles before use. This applies in particular to honed or polished products. | Diluted muriatic acid   | (various manufacturers)  |
|                     | Pencil marks and metal marks    | Abrasive paste           | Follow the instructions given by the manufacturer of the detergent. Test the product on the tiles before use. This applies in particular to honed or polished products.  | Polishing cream Vim clorox Detergum (*) Strong remover (*) (*DO NOT use on lapped or polished products. | Faberchimica Guaber Zep Italia Faberchimica  |
|                     | Ink/felt-tip pen                | Detergent solvent based  | Solvents should be applied undiluted directly on the stain. Let them act for about 15/30 seconds. If necessary repeat. As far as "Coloured stain remover" is concerned, follow the manufacturer's instructions.                    | Nitro thinner 12-dichloroethylene Turpentine / white spirit Coloured stain remover                      | (various manufacturers) (various manufacturers) (various manufacturers) Faberchimica |
|                     | Nail polish                     | Detergent solvent based  | Solvents should be applied undiluted directly on the stain. Let them act for about 15/30 seconds. If necessary repeat.   | Acetone Solvent for nail polish   | (various manufacturers) (various manufacturers)                                      |
|                     | Dirt from grout                 | Detergent for grout      | Follow the instructions given by the manufacturer of the detergent   | Fuganet Fugenreiniger   | Fila Lithofin  |

## BOX PACKING

